



Salina Community
Economic Development
Organization

Timothy F. Rogers, A.A.E

Executive Director

E-mail: trogers@salair.org

March 17, 2022



- Scheduled Air Service Update & Discussion

Topics:

- NIAR WERX Update
- MRO Hangar Improvements



Scheduled Air Service Update and Discussion



UNITED STATES OF AMERICA
DEPARTMENT OF TRANSPORTATION
OFFICE OF THE SECRETARY
WASHINGTON, D.C.

Issued by the Department of Transportation
on the 11th of March, 2022

Essential Air Service at:

ALAMOSA, COLORADO	DOT-OST-1997-2960
CAPE GIRARDEAU, MISSOURI	DOT-OST-1996-1559
CLARKSBURG, WEST VIRGINIA	DOT-OST-2005-20736
DECATUR, ILLINOIS	DOT-OST-2006-23929
DEVILS LAKE, NORTH DAKOTA	DOT-OST-1997-2785
DODGE CITY, KANSAS	DOT-OST-1998-3502
EAU CLAIRE, WISCONSIN	DOT-OST-2009-0306
FORT DODGE, IOWA	DOT-OST-2001-10682
FORT LEONARD WOOD, MISSOURI	DOT-OST-1996-1167
GREENBRIER/LEWISBURG, WEST VIRGINIA	DOT-OST-2003-15553
HANCOCK/HOUGHTON, MICHIGAN	DOT-OST-2009-0302
HATTIESBURG/LAUREL, MISSISSIPPI	DOT-OST-2001-10685
HAYS, KANSAS	DOT-OST-1998-3497
JAMESTOWN, NORTH DAKOTA	DOT-OST-1997-2785
JOHNSTOWN, PENNSYLVANIA	DOT-OST-2002-11451
JOPLIN, MISSOURI	DOT-OST-2006-23932
KEARNEY, NEBRASKA	DOT-OST-1996-1715
LIBERAL, KANSAS	DOT-OST-1998-3498
MASON CITY, IOWA	DOT-OST-2001-10684
MERIDIAN, MISSISSIPPI	DOT-OST-2008-0112
MUSKEGON, MICHIGAN	DOT-OST-2009-0301
NORTH PLATTE, NEBRASKA	DOT-OST-1999-5173
PADUCAH, KENTUCKY	DOT-OST-2009-0299
PUEBLO, COLORADO	DOT-OST-1999-6589
SALINA, KANSAS	DOT-OST-2002-11376
SCOTTSBLUFF, NEBRASKA	DOT-OST-2003-14535
SIOUX CITY, IOWA	DOT-OST-2011-0131
STAUNTON, VIRGINIA	DOT-OST-2002-11378
VICTORIA, TEXAS	DOT-OST-2005-20454

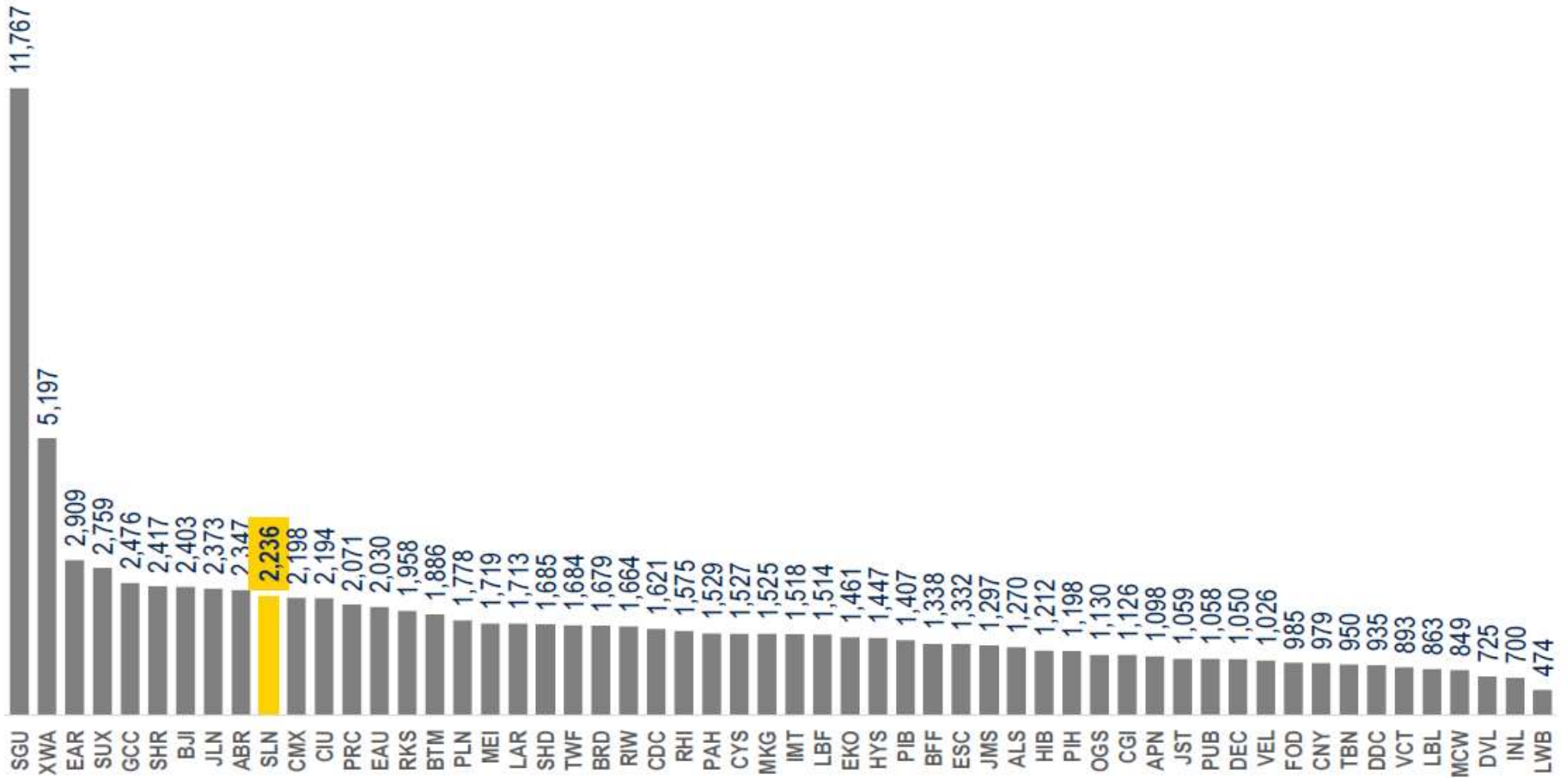
Under 49 U.S.C. § 47131 *et seq.*

ORDER PROHIBITING TERMINATION OF SERVICE AND
REQUESTING PROPOSALS

Traffic Context

In December 2021, SLN was 10th of the 57 prorate markets shown in traffic production and the 9th most improved versus 2019, placing it in the first quartile for both metrics

December 2021 TSA Throughput in SkyWest Prorate Markets Where SkyWest is the Sole Operator as of February 2022



MAP OF AFFECTED COMMUNITIES AND HUB AIRPORTS



Essential Air Service (EAS) Timeline

March 10, 2022	SkyWest submits a Notice of Termination to the USDOT
March 11, 2022	USDOT issues an Order Prohibiting Termination of Service and Requesting Proposals
April 11, 2022	Deadline for interested air carriers to submit proposals to the USDOT
April TBD	Deadline for community comments
May TBD	USDOT air carrier selection
June/July TBD	Transition from SkyWest to replacement air carrier



NIAR WERX Update

The logo for NIAR (National Institute for Aerospace) features the word "NIAR" in a bold, italicized, black sans-serif font. A yellow swoosh underline is positioned beneath the letters "I" and "A".

NIAR

The logo for WERX (Wichita Engineering Research eXperiment) features the word "WERX" in a bold, black sans-serif font. A yellow swoosh underline is positioned beneath the letters "E" and "R".

WERX

AT WICHITA STATE UNIVERSITY

A large white commercial aircraft is shown from a front-on perspective inside a spacious hangar. The aircraft's two large engines are prominent on either side of the fuselage. An American flag is suspended vertically behind the cockpit. A person is visible on an orange scissor lift platform near the aircraft's nose. The hangar's interior is filled with structural beams and various pieces of equipment.

**ENGINEERING SERVICES
ENVIRONMENTAL TEST
MRO
FLIGHT TEST & CERTIFICATION**

DESIGN BUILD TEST



WERX Growth Timeline

AT WICHITA STATE UNIVERSITY

2012

Boeing Leaves Kansas – Kansas is no longer modifying large aircraft

2014

ACFL Purchases Existing Boeing Military and Modification center

2018

WERX starts - 55 Engineers working @ campus for one customer

2019

WERX Grows to 100 leases old Boeing Engineering Building

2020

WERX Grows to 200 adds NIAR Environmental Test Lab to WERX

2021

WERX Grows to 400 adds MRO 140H (Air Force One Hangar)

2022

WERX currently @ 500 adds New 80K square foot Hangar



WERX will add 200+ Kansas Jobs a Year



WERX LOCATIONS

AT WICHITA STATE UNIVERSITY



ENGINEERING SERVICES
FLIGHT TEST CENTER

**NIAR WERX
HEADQUARTERS** Air
Capital Flight line
BLD G 23L

ENVIRONMENTAL TEST

WERX TESTING
Air Capital Flight
line BLD G 13L

MODIFICATION REPAIR &
OPERATIONS

WERX MRO SITE 1
Air Capital Flight Line
BLD G 140 H

MODIFICATION REPAIR &
OPERATIONS

WERX MRO SITE 2
Air Capital Flight Line
BLD G 163 N





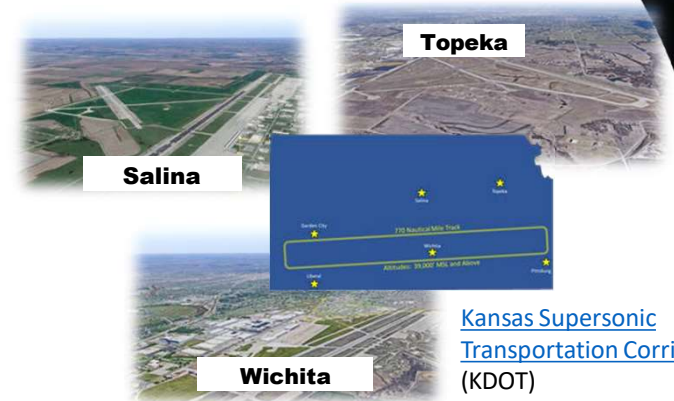
WERX MRO
AT WICHITA STATE UNIVERSITY

Secure long-term growth aligned with KS “Framework for Growth”

- Create and retain jobs in new and expanding market sectors
- Develop MRO, Flight Test, & Modification capability
- Development projects to attract and retain new business
- Support all three pillars of KBORs “Building a Future”

NIAR WERX will enable the State, Military and Private sector to:

- Diversify the Kansas aerospace market
 - MRO, UAS, Hyper/Supersonic, Modification, Flight Test
- Accelerate frequency of new product development
 - Traditional and new market sectors
- Make Kansas the location of choice
 - Reduce non-recurring cost via non-profit cost structure
- Maximize utilization of new Supersonic Transportation Corridor
- Support the modern-day warfighter via Joint Test & Evaluation Site



MRO and Mod
Source: Aircraft maintenance - Wikipedia



Commercial Space
From: The Spaceship Company



UAS Development
Pics from: <http://droneguidebook.com/?p=622>
Local example: [AgEagle](#)

Leveraging Wichita, Salina, and Topeka workforces and institutions



WERX Current Programs

AT WICHITA STATE UNIVERSITY

- Aero Air MD87 Fire Tanker Modification
 - 1 Aircraft in Maintenance now coming to Wichita for Modification Oct 2021
 - Potential for 4 More Aircraft to undergo Modification in Wichita 2022-2024
- Dynamic Aviation 737 Aerial Sprayer Modification
 - 3 in work with a AC undergoing modification
 - Potential for 15 more AC on contract 2022-2025
- Kansas Mod Center 777 Passenger to Freighter Modification
 - 2 777 in Wichita Oct 2021 will be used for Flight test and modification
 - Plan to complete and deliver 3 AC in 2024
 - Plan to complete and deliver **12 AC per year with Salina**
 - Plan to complete and deliver **18 AC per year with Topeka**
- Military Work: B1, UH60, F18, F16
 - CATIA Checking/Modeling support
 - Finite Element Modeling for future modification as required to keep AC flying



Copyright Jeff Zimmerman 2014



Current workforce @ WERX 400 heads + 100 students



WERX 737-500 Oil Spill Recovery

AT WICHITA STATE UNIVERSITY

Environmental Response Aircraft – WERX Design, Modification, and Certification

- Component and Certification Testing Services
- Aircraft Inspection, Repair, and Heavy Maintenance Involvement
- Heavy Aircraft Modification Effort – 3 Aircraft Concurrently
- Ground and Flight Certification Testing - January 2022
- Customer Operational Deployment – March 2022
- NIAR WERX - FAA STC Certification – June 2022



First Two Aircraft Arrived for Conversion – Q1 2021



WERX
AT WICHITA STATE UNIVERSITY

MD-87 Fire Bomber

Multi Aircraft Program

- Support Existing Customer Engineering
- Aircraft Inspection and Retrieval for Modification
- Heavy Aircraft Modification
- Return to Service and Flight Testing Completed Aircraft



First Aircraft Arrived for Conversion – Q4 2021

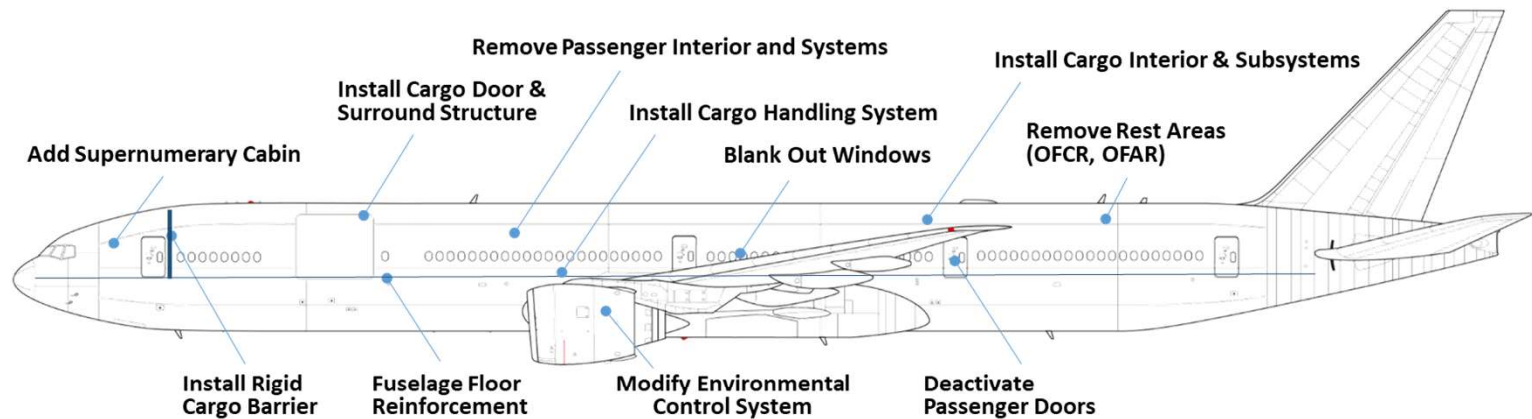


WERX 777-300 P2F Conversion

AT WICHITA STATE UNIVERSITY

Annual Multi Aircraft Program

- In-house Design, Modification, and Certification
- Component and Certification Testing Services
- Aircraft Inspection, Repair, and Heavy Maintenance Involvement
- Heavy Aircraft Modification Effort
- Ground and Flight Certification Testing
- FAA STC Certification and Delivery – 2024



First Aircraft Arrived for Conversion – Q3 2021, Second Aircraft Q1 2022



WERX Future Programs

AT WICHITA STATE UNIVERSITY

- Commercial Aircraft
 - 777 P2F Modification - Deliver 3 AC in 2024, 12-18 AC per year
 - A321 New Aircraft Mods for US Airline - Potential for 24 Aircraft in 2022
 - Aero Air MD87 Fire Tanker Modification - Potential for 4 More AC 2023-2025
 - Other P2F Conversions for Overseas lessor - 3-5 more AC on contract 2022-2025
- Military Work: B1, UH60, F18, F16, commercial derivative aircraft
 - Future AC modification for DoD (several in work)
 - Military obsolescent/modification parts and aircraft
 - Certification Support for existing fleet and new models
- FUTURE Work opportunities
 - Prototype Aircraft (up to 20 737 sized AC)
 - Prototype Air Mobility (up to 10-20)
 - Prototype Spacecraft

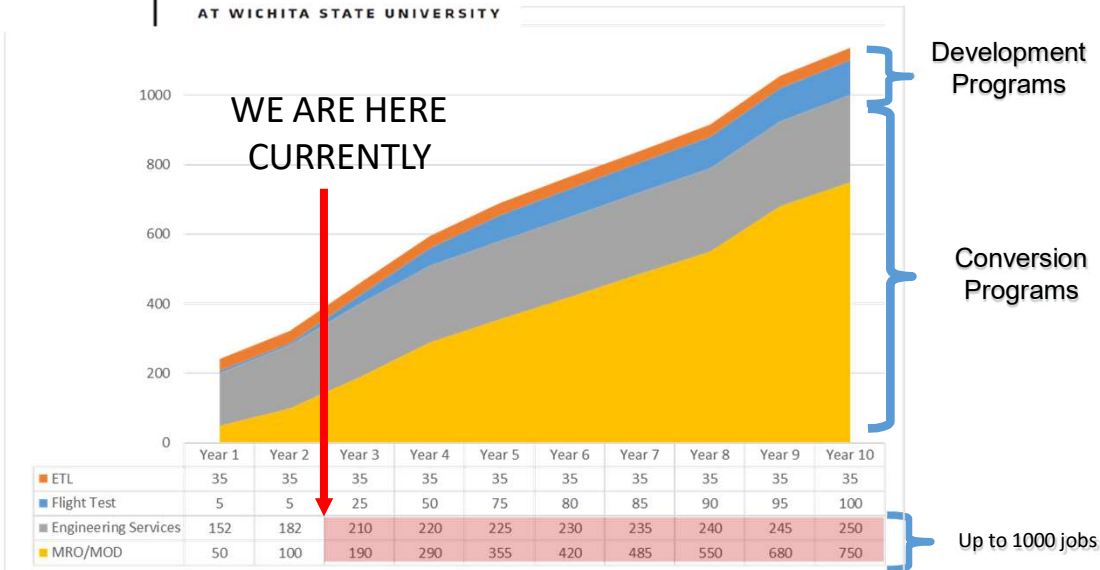


**WERX future workforce projecting an additional 200 Jobs each year
400-800 new jobs in Wichita by 2025
800-1200 WERX workforce by 2025**



WERX 777 P2F Kansas Jobs

AT WICHITA STATE UNIVERSITY



- Engineering
- Test and Certification
- MRO / Modification
- Customer Support



Program Phases



Sites

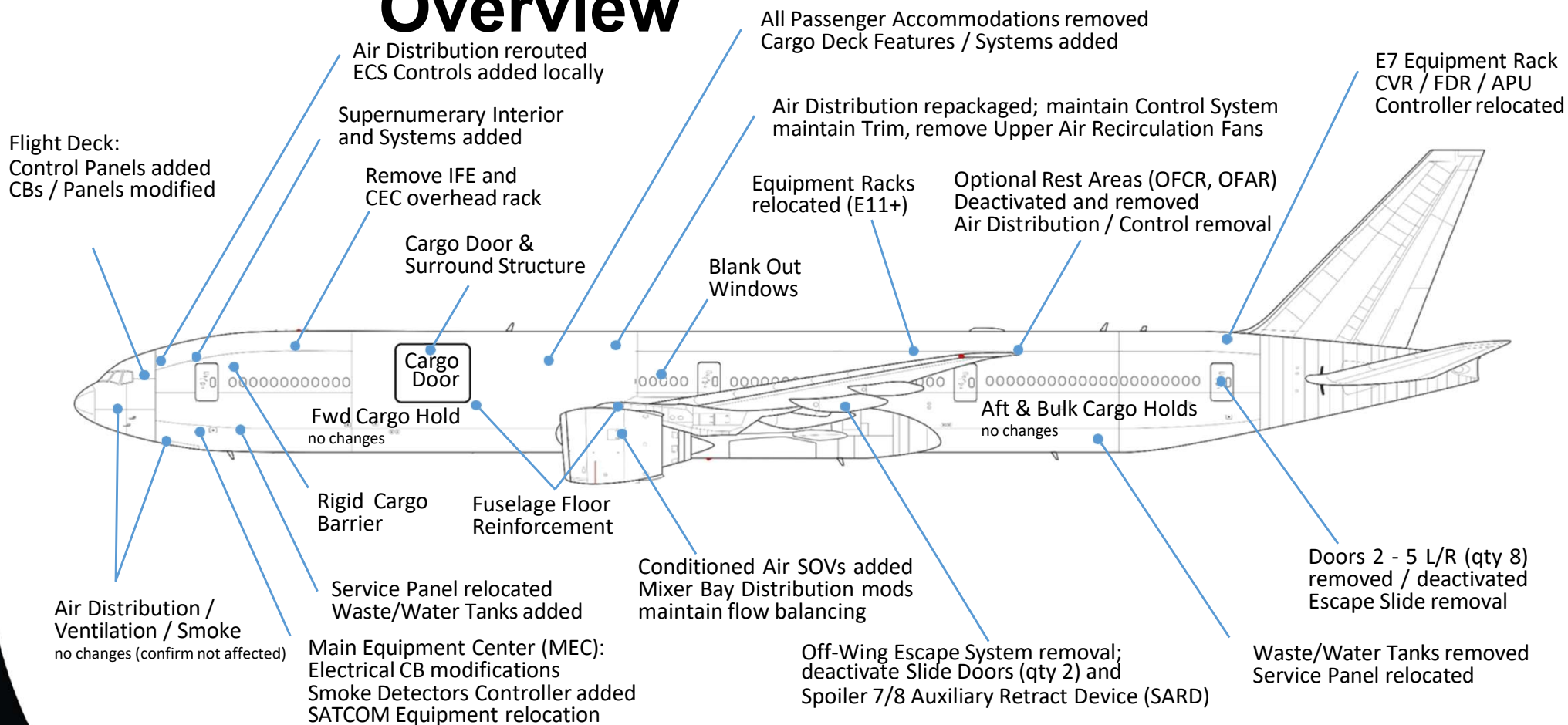


10 aircraft per year at full rate



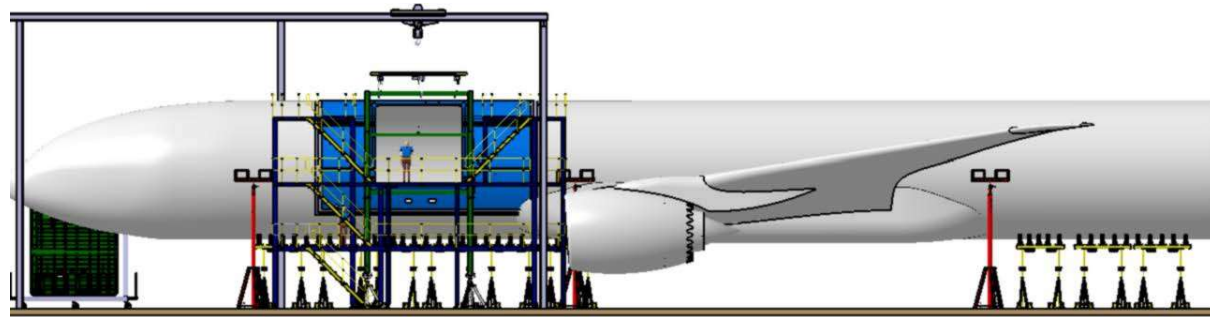
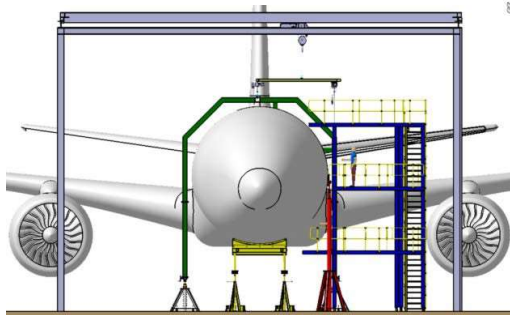
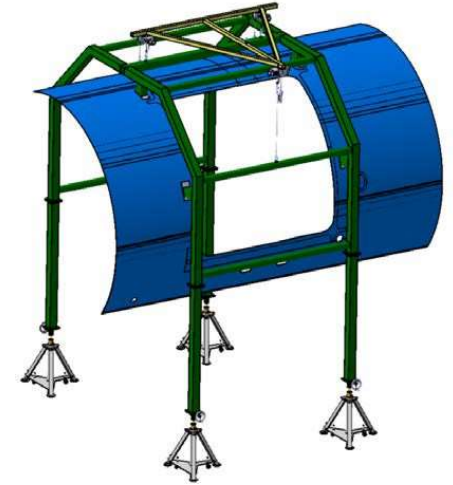
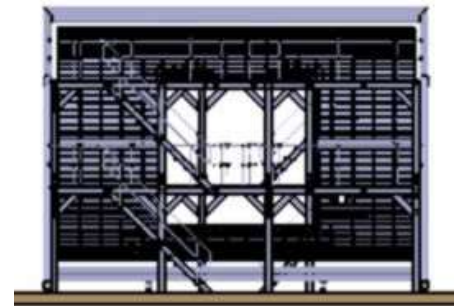
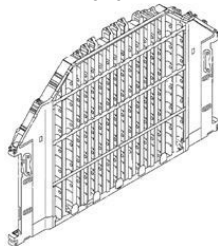
- NIAR model successful in many areas
 - Nationally renown R&D labs, training and structural & materials centers of excellence
- Extend the model into key new areas
- NIAR WERX (Putting Research to Work)
 - ✓ Engineering Services: 200+
 - ✓ Environmental Test Lab: 35+ jobs
 - ★ New: MRO and modification: 750 jobs
 - ★ New: Flight Test Center: 75-100 jobs

Overview



Tooling and GSE Needed

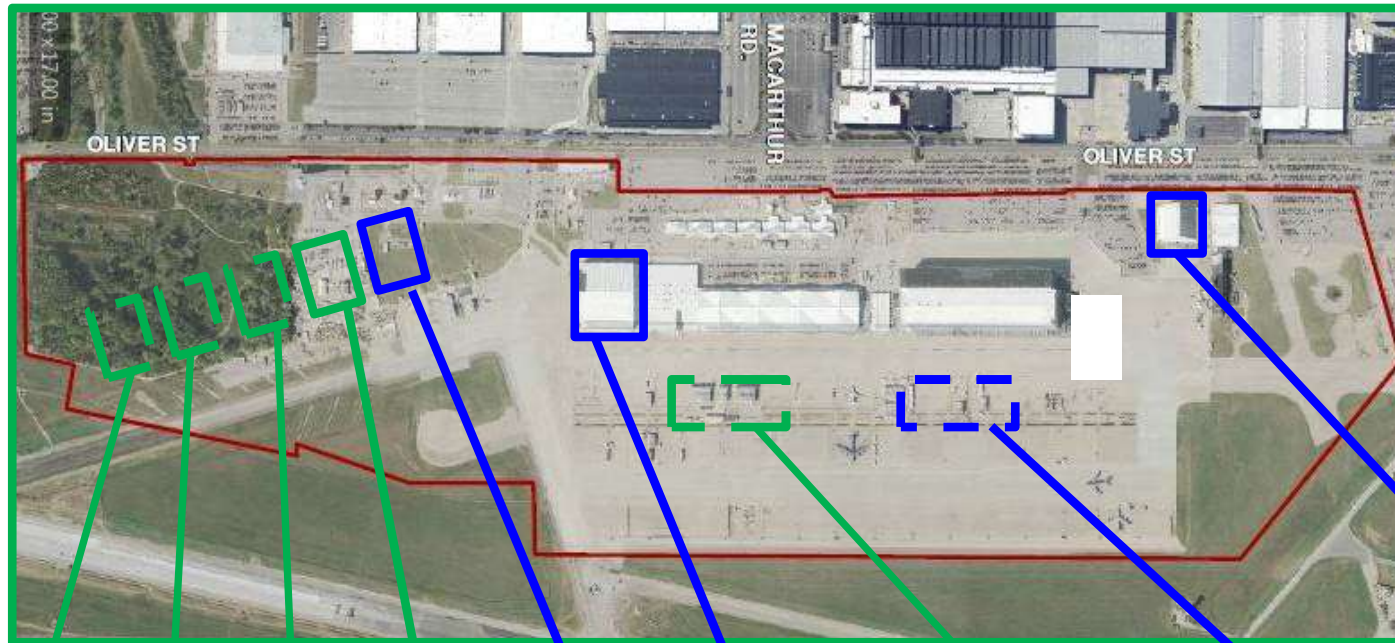
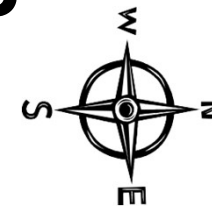
- 777 P2F Tooling Design and Fabrication in work by KMC with aircraft rate buildup considerations
- Extensive A/C Scanning In Work and Digital Alignment Processes Planned
- Obtaining 777 Ground Support Equipment aligning with schedule





WERX Future Plan Wichita KS

AT WICHITA STATE UNIVERSITY



Legend

Low Bay: > than 30' ceiling height or less
High Bay: < than 30' Ceiling Height

- Occupied by WERX
- FUTURE WERX Growth

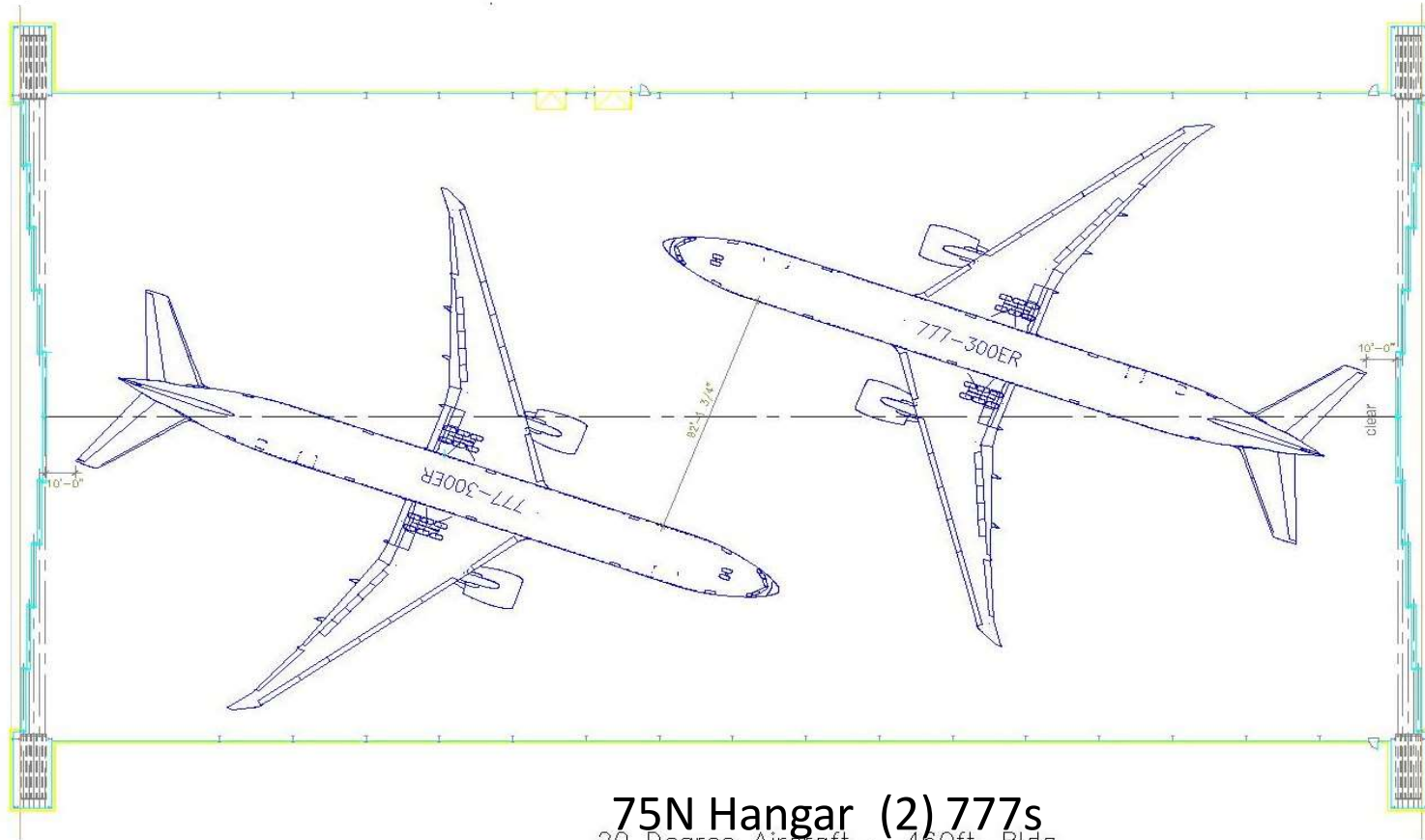
- ~171N Hangar (Future)
- ~169N Hangar (Future)
- ~167N Hangar (Future)
- 165N Hangar (Paint)
- 163N Hangar (WERX) 80K sq. ft.
- Building 140H (WERX) 111K sq. ft.
- ~100N Low Bay Hangar (Future)
- ~75N Hangar 777 (2) (WERX 2024) 142K sq. ft.
- 16K Low Bay Hangar WERX 2022 41K sq. ft.





WERX 75N HANGAR – Two 777s

AT WICHITA STATE UNIVERSITY



75N Hangar (2) 777s
20 Degree Aircraft – 460ft. Bldg.
(WERX 2024)
142K sq. ft.



WERX
AT WICHITA STATE UNIVERSITY

Future Plans Salina KS



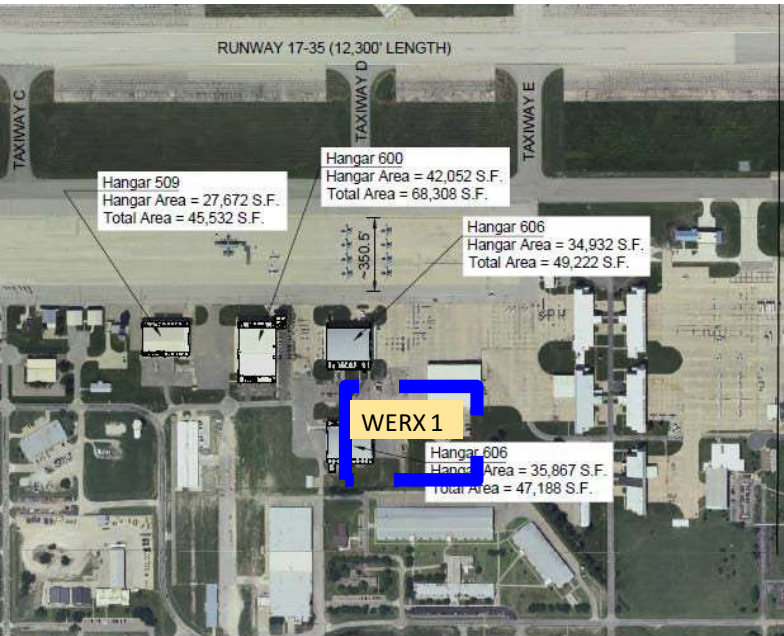
Salina Expansion

- WERX 1 – Hangar 35K sq. ft. - Only up to 737 size
- WERX 2 – Hangar 142K sq. ft. – Fits up to (2) 777s



WERX
AT WICHITA STATE UNIVERSITY

Closer Look at Salina KS



Salina Expansion

- WERX 1 – Hangar 35K sq. ft. - Only up to 737 size
- WERX 2 – Hangar 142K sq. ft. – Fits up to (2) 777s





Requesting your Support

Wichita – \$20M (current need)

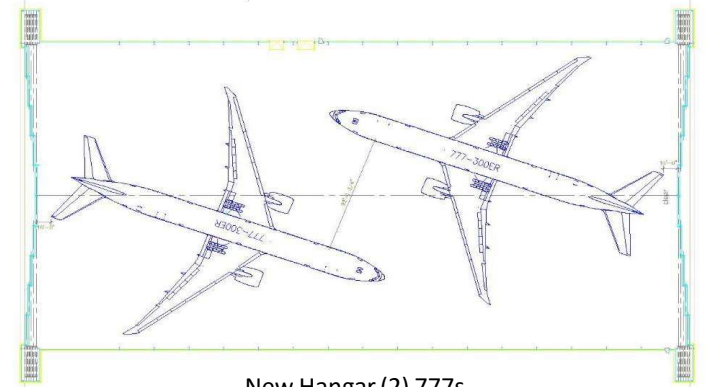
- New 2 position 777 Hangar leveraging Private Equity
- Tooling for Mod and GSE for servicing and handling
- MRO Software and process development
- Flight and Ground Test Equipment

Salina - \$15M (current need)

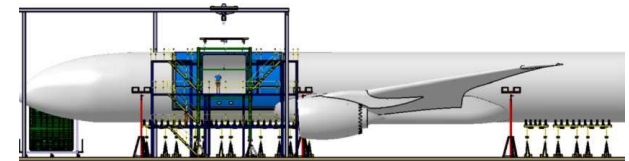
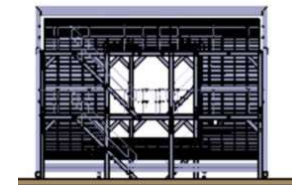
- New 2 position 777 Hangar leveraging Private Equity
- Tooling for Mod and GSE for servicing and handling

Topeka - \$15M (now or later)

- New 2 position 777 Hangar leveraging Private Equity
- Tooling for Mod and GSE for servicing and handling

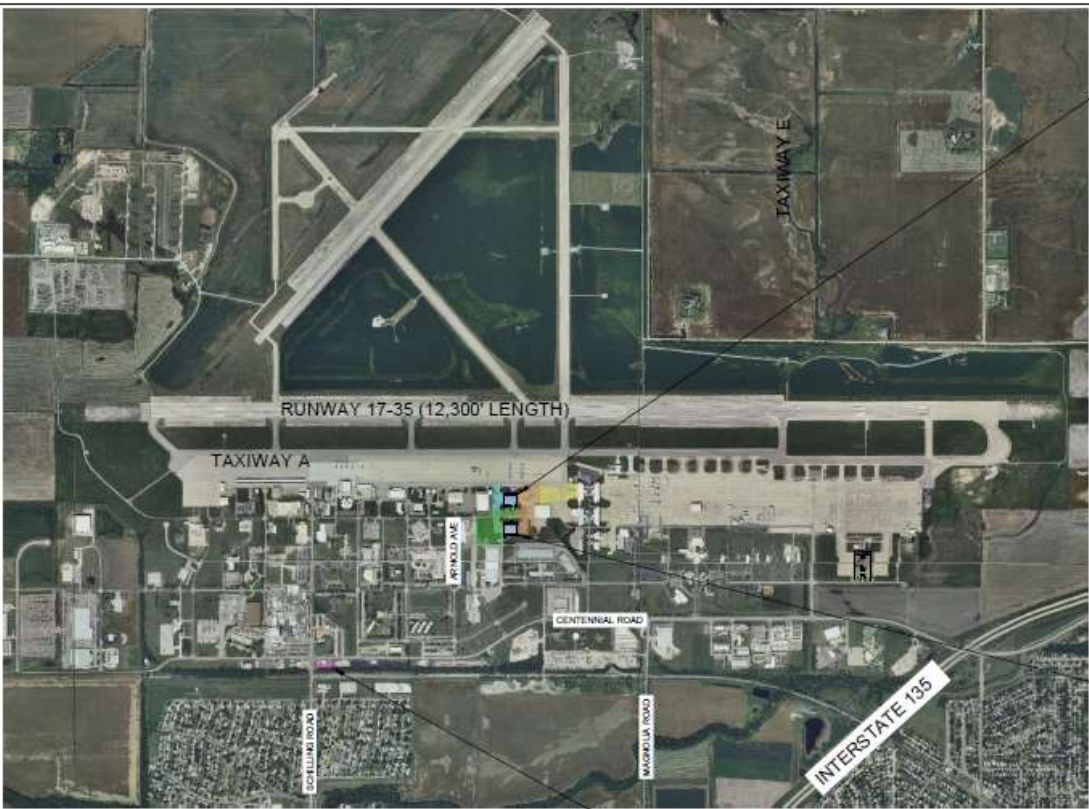


New Hangar (2) 777s
142K sq. ft.





MRO Hangar Improvements



Scale: 1"=2500'



Scale: 1"=100'



Drawing Number 3038-02-22



3237 ARNOLD, SALINA, KS 67401
(785-827-3914 FAX: 785-827-2221)

None : REVISIONS

MNC : DESIGNED BY

MNC : DRAWN BY

1"=250' : SCALE

02-17-22 08:30 : DATE



SALINA AIRPORT AUTHORITY
Ramp and Parking Lot Mill and Inlay Area Location Map

F:\Public\Facility_Master\00EmailDuplication\A\APAC\MillandInlayLocationMap.dwg

***SALINA** Airport*

Authority

Salina, Kansas, USA

